

A large, light orange paw print logo is centered in the background of the slide. The paw print has five distinct pads, each with a slightly irregular, hand-painted appearance. The text is overlaid on this logo.

Clemson Updates

NCPN-FT Tier II meeting

Libby Cieniewicz

April 29, 2020

Southeastern Budwood Program

Samples collected from commercial orchards in South Carolina and Georgia



Trees are tagged and blocks are mapped

Chambers Can, Titan Farms Sunny J

New for 2017

4815	4816	4810
4814		4839
4813		4838
4812		4837
4811	4817	4836
4810	4816	
	4815	4835
4809	4820	4834
4808	4821	4833
4807		4832
4806		4831
4805		4830
4804	4822	4829
4803	4823	4828
4802	4824	4827
4801	4825	4826

GPS coordinates
N 33.48 14
W 81.44 14

Dampled April 16, 2019

Plum Pox virus was not detected in any of these trees.
Prune dwarf virus was not detected in any of these trees.
Plumus necrotic ringspot virus was detected in trees:
4809 4816 4819 4821
4821 4822 4833 4837
All tests were completed using ELISA.

Page 44 5/16/2019

Nurseries (located in TN) use maps to collect virus-indexed budwood for June-budding

Viruses indexed for:

- Prunus necrotic ringspot virus
- Prune dwarf virus
- Plum pox virus



Budwood Program Updates 2020

- ELISA testing in progress (approved as essential University task)
 - ~2,400 samples for scion budwood
 - ~2,000 Guardian rootstock program
 - PDV, PNRSV, PPV
- Discussing adding a new nursery to the program
- Adding ~15 additional blocks, increasing blocks for popular varieties

Foundation at Clemson

Maintain a collection of **low chilling hour requirement, virus-tested** stone fruit cultivars in an insect-resistant screenhouse and in a developing G1 foundation field block.

3 trees of each cultivar in **screenhouse**

10-30 trees of each in 4 acre **field block**

2.5 acres fumigated in March, cover cropping for planting early next year



Current Foundation at Musser Farm

Screenhouse



x2-4

O'Henry
Flameprince
Rubyprince
Spring Satin (plum)
Juneprince
Ruby Queen
Red Globe

Red Skin
Cary Mac
Flavorich
Marsun
Summer Gold

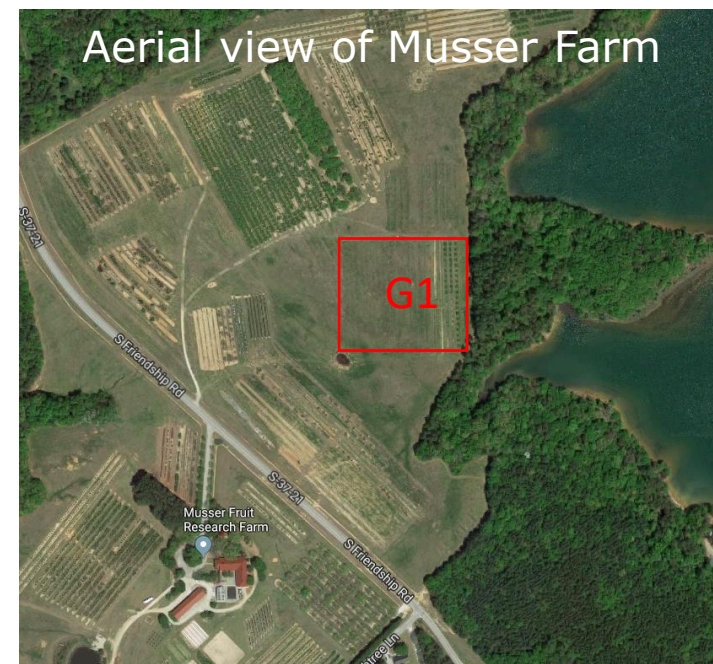
Early Augustprince
Cresthaven
Big Red
Guardian

Field Block



x10

O'Henry
Flameprince
Rubyprince
Spring Satin (Plum)
Juneprince
Ruby Queen
Red Globe





Current Foundation at Musser Farm

- Finalizing a list for requests of accessions to add to our foundation collection
- Funds left over from Dr. Scott:
 - Purchased new real time PCR
 - Fumigated part of the G1 field block at Musser

Questions?

